

Residential Guide to
WASTE DISPOSAL
and
RECYCLING
in Collier County



Colliercountyfl.gov/solidwaste (239) 252-2380



Table of Contents

Services and Facilities	1
Curbside Collection and Disposal Services	2 - 3
Bulky Items and Yard Waste	4 - 5
Household Hazardous Waste	6 - 7
Recycle Right	8 - 9
Multi-family Recycling	10
Be Bear Wise	11
Disaster Debris Removal	12 - 13
Facilities and Hours	Back Cover

Services and Facilities in Collier County

The Solid and Hazardous Waste Management Division manages the collection of household waste, recyclable material, yard waste and bulky service throughout Collier County.

Waste Management, Inc. of Florida and Waste Connections of Florida are the contracted haulers in Collier County for residential solid waste collection. They service all areas within the county with the exception of the City of Naples.

In addition to curbside solid waste, recycling, yard waste, and bulky collection, Collier County operates several recycling drop-off centers to collect and properly dispose of household hazardous waste. Items that can be recycled may also be dropped off at these conveniently located centers.

The mission of the Collier County Solid and Hazardous Waste Management Division is to deliver the best value, highest quality, sustainable solid waste management services that meet our customers' expectations while protecting the environment. This serves to extend the life of the landfill and preserve beautiful Collier County.

For more information about Collier County's programs, visit colliercountyfl.gov/solidwaste. Please call our friendly customer service team at (239) 252-2380 for specific information.





Curbside Collection and Disposal Services

Solid Waste Curbside Collection and Disposal Services include:

- Twice-a-week curbside collection of household waste
- Once-a-week recycling collection
- Once-a-week yard waste collection
- Call to schedule collection of bulky items, appliances, electronics, tires, or batteries

Place your household waste in the green top cart and your recyclables in the yellow top cart. Your trash and recycling carts are assigned to your home's address, not to the homeowner. If you move, please leave the cart at the residence. Each dwelling is entitled to two recycling and one garbage cart. You can purchase additional carts.

You must place your carts curbside no sooner than 6 p.m. the night before and no later than 6 a.m. on collection day. Carts and materials shall be placed at least three feet from mailboxes and other obstacles. Customers shall remove carts from curbside by 6 a.m. on the day after the scheduled service.

For inquiries regarding solid waste or recycling, call Customer Service at (239) 252-2380 Monday through Friday from 8 a.m. to 5 p.m. Select option two for Solid Waste and then option one for assistance with solid waste services such as delivery of new, replacement or additional carts.

If your cart is missing, stolen or damaged, it will be



replaced free of charge. If the cart must be replaced because of customer negligence, you may be charged the replacement price plus a delivery fee.

If you find a sticker on your cart, please read it carefully. Remove any nonconforming materials or contaminants.



HOLIDAY COLLECTION SCHEDULE

There will be no collection on the following holidays:

- Fourth of July
- Thanksgiving Day
- Christmas Day

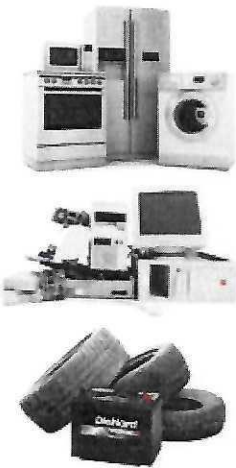
There are no make up days. If your collection falls on one of these holidays, your trash, recycling, bulky items and yard waste will be collected on your next scheduled day.



Bulky Items and Yard Waste

Please call (239) 252-2380, 48 hours in advance for bulky waste collection. You may place bulky items at curbside on your recycling collection day. Bulky items include furniture, bicycles and other items too large to fit in your green trash cart.

Scheduled bulky items include:



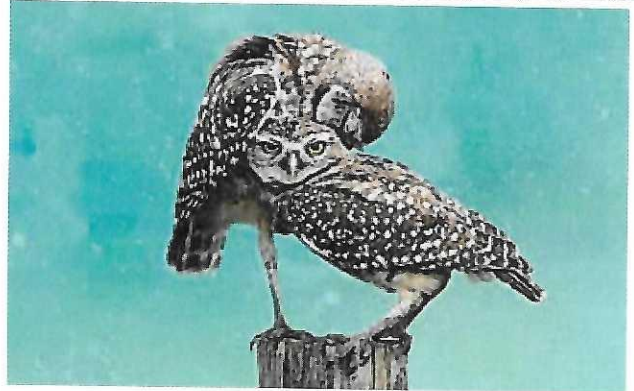
- **APPLIANCES** such as refrigerators, stoves, dishwashers, washers and other household appliances. Doors must be removed to avoid entrapment of children and all contents must be removed.

- **ELECTRONICS**

- **TIRES and BATTERIES**
You may dispose of two vehicle batteries and four standard vehicle tires per month.

CONSTRUCTION and DEMOLITION DEBRIS

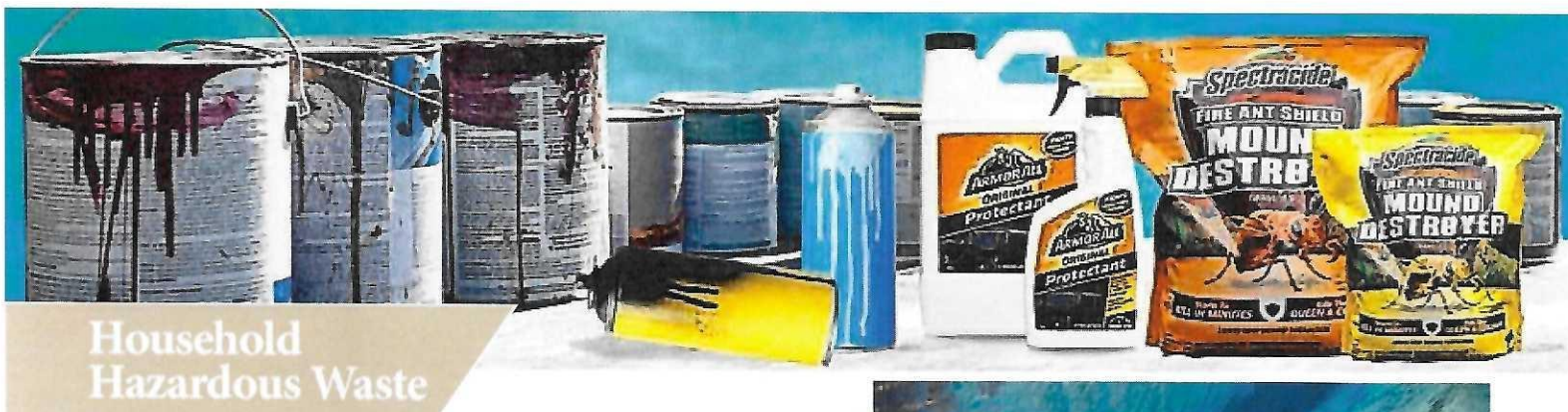
You may dispose of debris from small do-it-yourself projects in your green waste cart. If it does not fit in the cart, DO NOT put it at the curb. These materials should be removed by the contractor or the homeowner can take it to the Collier County Landfill for proper waste disposal.



YARD WASTE is collected curbside on your recycle collection day. Yard waste bundles, yard waste paper bags and personal containers are limited to 10 per collection. During the holidays, Christmas trees are collected as yard waste. *Remove tinsel and decorations.*

To ensure your yard waste is collected please follow these steps:

- 1 BUNDLE IT**
Bundles must weigh less than 50 pounds, be secured with twine and no longer than 4 feet. Branches may not be larger than 4 inches in diameter.
- 2 BAG IT**
Use ONLY paper yard waste bags or paper grocery bags. Plastic bags will not be accepted. Put all leaves, grass and other trimmings in bags.
- 3 CONTAINER IT**
You may use 45-gallon personal containers that weigh less than 50 pounds when filled. The yard waste may not extend more than 12 inches over the top of the container.



Household Hazardous Waste

Every day, we use many products to clean, repair, and maintain our homes, cars, gardens, and pools. Many of these products contain substances that are harmful to people, pets, or our environment. Stay safe by disposing of them properly, keeping them in original containers with tight lids and don't mix them together.

PROPER DISPOSAL

Always dispose of hazardous products properly and responsibly. Do not pour them on the ground or into storm drains. Bring household hazardous waste to your nearest drop-off center for environmentally safe disposal. Some items may be subject to a small disposal fee. Never place chemicals or other hazardous materials in your trash/recycle cart, this can result in a truck fire.

Know the Hazardous Products in Your Home

INSIDE THE HOUSE

- Aerosol sprays
- Cleaning products
- Cooking oils
- Drain cleaners
- Fluorescent bulbs
- Laundry detergents
- Batteries - all types
- Fire extinguishers
- Sharps (needles) in approved plastic container

(For locations where medications are accepted visit www.drugfreecollier.org)



IN THE GARAGE

- Automotive fluids, used motor oil and filters
- Auto and boat batteries
- Gas, glues and lubricants
- Thermometers
- Paint, stains, sealers, solvents and cleaners
- Flares and ammunition

FOR THE YARD

- Weed and insect killers
- Fertilizers
- Chlorine and pool supplies
- Propane tanks
- Rat poison

Recycle Drop-Off Centers also accept the following:

- Electronics
- Cardboard
- Scrap Metal
- Paper Shredding
- Tires

See back page for locations

For a current list of acceptable material, visit Colliercountyfl.gov/recycle



Recycle Right

It's as easy as



- 1** Remove food waste from containers.
- 2** Fill your container with clean and dry recyclables. Do not bag them. Leave them loose.
- 3** Place containers curbside before 6 a.m. on collection day, or after 6 p.m. the night before, leaving three feet from other objects for automated collection.



Make every attempt to recycle these items:

Plastic bottles and containers labeled 1-5 & 7.

Expert tip! Recycle plastic only if shaped like a bottle, jar, jug or tub.



Metal food and beverage cans made of tin, aluminum and steel.

Expert tip! Rinse all cans of residue before placing in the cart.



Glass bottles and jars.

Expert tip! Clear, brown and green colored glass bottles and jars.



Paper, cardboard, cereal boxes, paper, magazines, newspapers, milk cartons and juice boxes.

Expert tip! Flatten larger boxes to allow more room in your cart. Soiled and wet paper belong in the trash.





Multi-family Recycling

If you live in a condo or multi-family complex, use yellow-top containers for recycling. See the recycling page for a complete list of accepted recyclables. Consult your property manager for disposal of bulky items.



Recycling is mandatory for all multi-family properties under Ordinance 2009-56.

Let us help inform your community about the best ways to preserve the environment or if need assistance setting up a recycling program call **(239) 252-7575**.

CHRISTMAS TREE DISPOSAL

When the holiday is over, contact your multi-family property manager for on-site instructions or dispose of natural Christmas trees at your local recycling drop off center.

Remove tinsel and decorations.



Be Bear Wise

Keep your garbage secure to keep bears away.

- All solid waste containers and/or plastic bags containing household garbage should be secured at all times prior to placing curbside for collection to deter bears.
- **DO NOT** pour chemicals over your waste as this creates dangerous fumes and can start a chemical fire.
- Wash and deodorize your carts regularly to reduce food odors that can attract bears.
- Customers who live in an area with black bears may choose to utilize a County approved bear-resistant container. To obtain your container, please call Waste Management, Inc. of Florida at **(239) 325-3213**.

To report a bear sighting, contact the FWC Wildlife Alert Hotline at **(888) 404-3922**.



Disaster Debris Removal

Debris generated by a declared emergency event requires special placement for collection. Here is your guide to separating and stacking disaster generated debris.

- Keep debris separate from your regular household waste and recycling.
- Debris shall be neatly stacked, piled or placed curbside by debris type.
- Don't place any debris close to trees, poles, cars or other structures. This includes fire hydrants, mail boxes and meters.
- Don't block roadways, traffic signs, swales or storm water structures.
- If you don't have a sidewalk, ditch or utility line in front of your house, place debris at the edge of your property before the curb.
- Any debris placed between your home and the sidewalk will not be picked up.

Please separate debris by type:

DISASTER RELATED VEGETATIVE

DEBRIS – logs, leaves, plants, tree branches and palm fronds.

Do not put in plastic bags



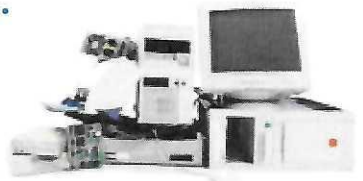
CONSTRUCTION AND DEMOLITION DEBRIS

– building materials, drywall, furniture, carpet and mattresses.



ELECTRONICS

– computers, radios, televisions.



APPLIANCES & WHITE GOODS

– air conditioners, washers, dryers, refrigerators. Remove all perishables and doors.



HOUSEHOLD HAZARDOUS WASTE

– oils, oil-based paints, pesticides and lawn chemicals.



Facilities and Hours

For a current list of acceptable material, refer to pages six and seven or visit Colliercountyfl.gov/recycle.

North Collier Recycling Drop-Off Center

9950 Goodlette Frank Road North

Monday - Saturday

8:30 a.m. to 4:30 p.m.

Naples Recycling Drop-Off Center

2640 Corporate Flight Drive

Monday - Saturday

8:30 a.m. to 4:30 p.m.

Marco Island Recycling Drop-Off Center

990 Chalmer Drive

Monday - Saturday

8:30 a.m. to 4:30 p.m.

Tim Nance Recycling Drop-Off Center

825 39th Avenue N.E.

(next to fairgrounds)

Monday - Saturday

8:30 a.m. to 4:30 p.m.

Carnestown Recycling Drop-Off Center

31201 Tamiami Trail East

Second Saturday of each month

9:00 a.m. to 2:00 p.m.

Hazardous Materials Collection Center

3728 White Lake Blvd.

Monday - Saturday

8:30 a.m. to 4:30 p.m.

Collier County Landfill

3730 White Lake Blvd.

Monday - Saturday

7:00 a.m. to 4:30 p.m.

Immokalee Transfer Station

700 Stockade Road

Monday - Saturday

7:30 to 11:30 a.m. and 12:30 to 3:30 p.m.